

HOT TUB STEP ASSEMBLY INSTRUCTIONS

☞ Before you start, lay all the parts (A to J) below on a flat, carpeted surface for ease of reference and to avoid scratching the pieces (and your floor!)

☞ In the unlikely event that there are any missing pieces, **(WE ARE SUPER SORRY)**, please get in touch with us at denkoe.com/contact and we will make it right!

Long bolt and nut x 7



Long black bolt x 3



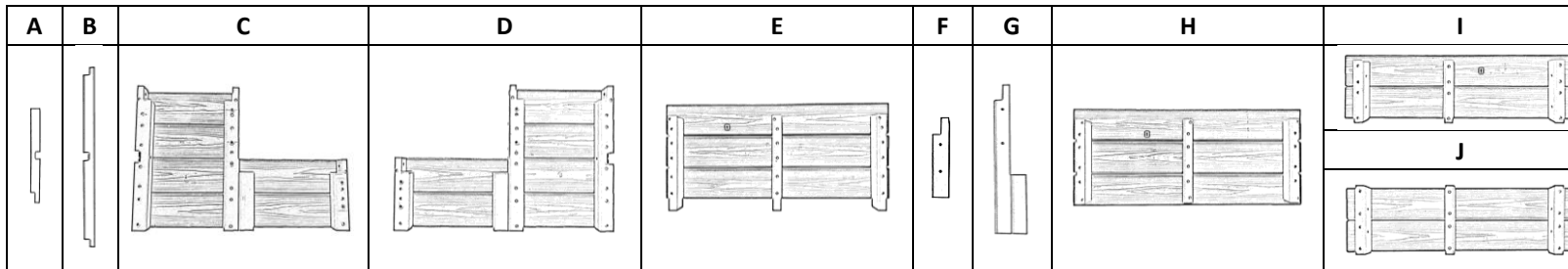
Standard bolt x 17



L key x 2

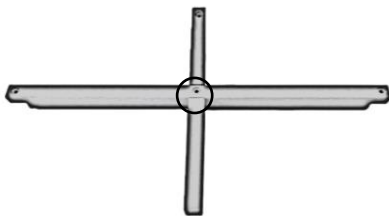


Wrench x 1

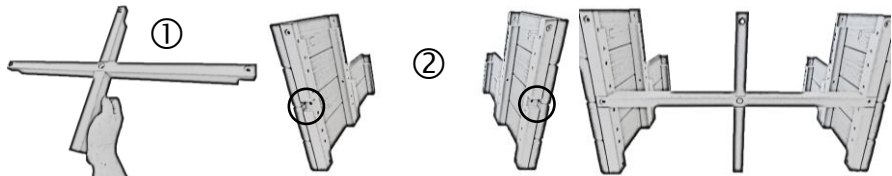


Step 1: Establishing a stable structure to build on.

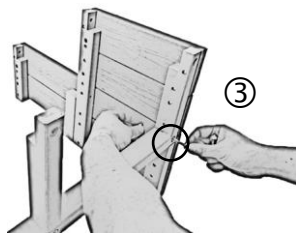
Create a cross bar by jiggling/tapping A into B and then fasten it using a long bolt and nut:



(1) Hold the cross bar (ensuring the tip with the flat surface is facing the floor) and (2) tap it into the cut outs located in the rear of the side panels (C and D):



(3) Secure both sides of the cross bar to the side panels (C and D) using long bolts and nuts:

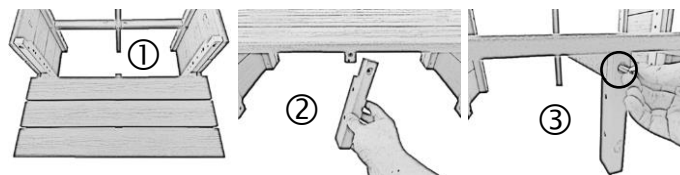


Step 2: Installing the bottom step.

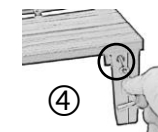
(1) Place the bottom step (E) into position and secure as follows:

Front side:

(2) Attach the short support leg (F) to the front centre of the bottom step (E) and then (3) secure it using a standard bolt.

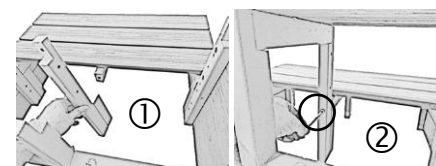


(4) Secure the bottom step (E) into the left and right hand side of the side panels (C and D) using standard bolts.

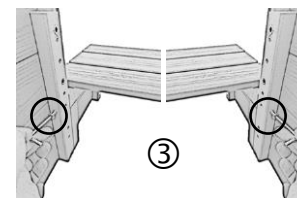


Rear side:

(1) Attach the long support leg (G) to the rear centre of the bottom step (E) and then (2) secure it using a long black bolt.



(3) Secure the bottom step (E) into the left and right hand side of the side panels (C and D) using the remaining long black bolts.



HOT TUB STEP ASSEMBLY INSTRUCTIONS

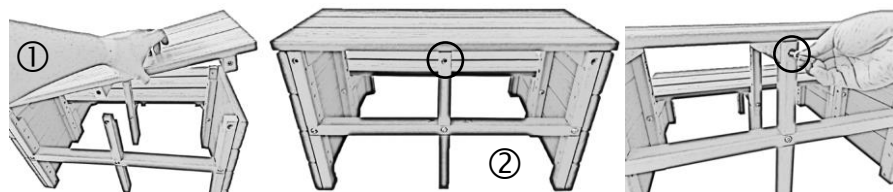
Step 3: Installing the top step.

(1) Place the top step (H) into position and secure as follows:

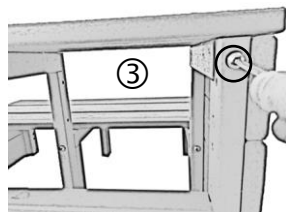
☞ The side with the extended lip should face forward. This way, the back of the step will sit flat against your hot tub.

Rear side:

(2) Secure the rear center of the top step (H) to the cross bar (A and B) using a standard bolt.

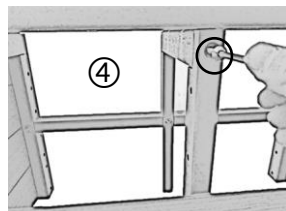


(3) Secure the top step (H) into the left and right hand side of the side panels (C and D) using standard bolts.

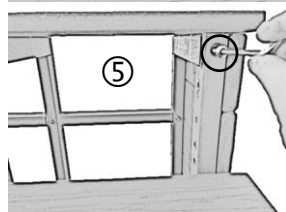


Front side:

(4) Secure the front centre of the top step (H) to the long support leg (G) using a standard bolt.



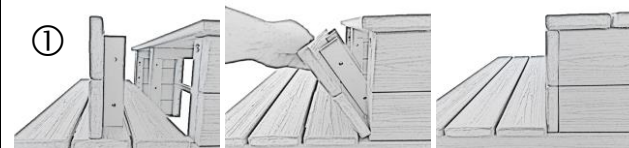
(5) Secure the top step (H) into the left and right hand side of the side panels (C and D) using standard bolts.



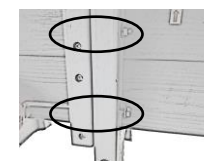
Step 4: Installing the top kick panel.

(1) Jiggle the top kick panel (I) into position (ensure it is the correct side up).

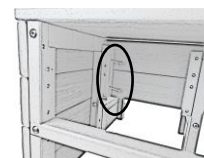
☞ You will need to jiggle it in at an angle to ensure the top kick panel (I) clears the top step (H) and fits into place. If unsuccessful, scan below to see video instruction.



(2) Once in place, secure it to the long support leg (G) from behind using long bolts and nuts.



(3) Once in place, use standard bolts to secure it to the side panels (A and B).



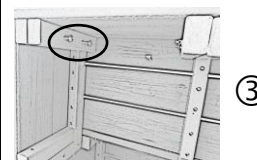
Step 5: Installing the bottom kick panel.

☞ For this step in the process, you will need to flip the step so you have access underneath.

(1) Place bottom kick panel (J) into position and (2) secure the middle of it to the short support leg (F) using a long bolt and nut.



(3) Once in place, use standard bolts to secure it to the side panels (A and B).



Step 6: Finishing up:

Go through and tighten bolts and nuts as required.
Congratulations, your hot tub step is ready for use!